

Technische Daten:

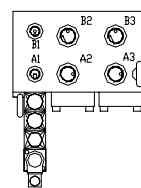
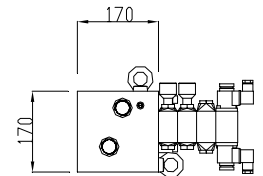
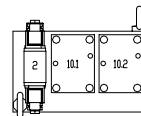
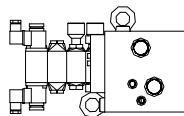
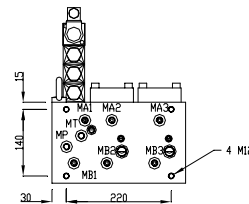
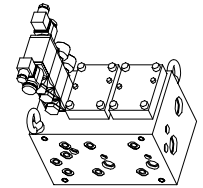
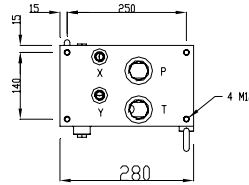
$p_{max}=350$ bar

Material: HYCUT 60 oder GGG40

Darstellung: mit 2x NG16 Abdeckplatten und 1x NG06 Höhenverkettung

xxx Ausgänge xxx

Flachloch	Typ	X	Y
4	T	165.00	135.00
	P	165.00	53.40
	X	83.00	24.00
	Y	83.00	185.00
5	MB3	215.00	128.00
	MA3	225.50	38.00
	MB2	115.00	128.00
	MA2	125.50	38.00
	MT	61.50	71.50
	MP	30.50	93.50
	MB1	46.00	128.00
	MA1	69.00	38.00
6	A3	215.00	38.00
	B3	215.00	118.00
	A2	115.00	38.00
	B2	115.00	118.00
	A1	46.00	38.00
	B1	46.00	128.00



Größe	Mass L [mm]	Mass B [mm]	Mass H [mm]	Gewicht kg	Artikel-Nummer
NG25	280	170	170	55,0	718053

Änderungen vorbehalten !

Lehmann Hydraulik GmbH

Von Hirschweg 10

DE 77799 Ortenberg

Tel. 0781 284207 0

Fax 0781 284207 34

email vertrieb@lehmann-hydraulik.de

Web www.lehmann-hydraulik.de

Stand 03/10

5.3.1